

EGTP

N50 19:83 W005 10:77

PERRANPORTH

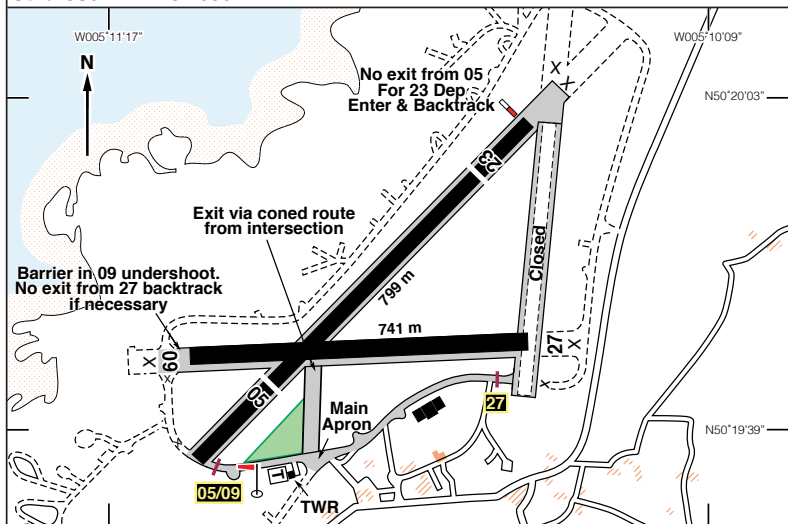
330 ft AMSL

6 nm SW of Newquay. 6 nm NW of Truro.

LND 114:20 061 21:2

c/s Perranporth Radio 119-755 A/G. Newquay APP 133-405.

Culdrose APP 134-050.



Rwy	Dim(m)	Surface	TORA(m)	LDA(m)	Lighting
05/23	799x18	Asphalt	05/23-799	05/23-799	Nil.
09/27	741x18	Asphalt	09/27-741	09/27-741	Nil.

Op hrs: PPR by telephone essential. 0800-1600 UTC or SS if earlier. 7 days a week.

Landing Fee: See website. **Maintenance:** By arrangement. **Customs:** PNR.

Remarks: Operated by Perranporth Airfield Ltd. Strictly PPR by telephone. Unlicensed aerodrome.

Pilots arriving from the east should first contact Newquay APP at least 15 nm out. Aircraft under control of RNAS Culdrose may operate in the Perranporth ATZ at 2000 ft QFE and above, accordingly aircraft should not fly within the ATZ above 1500 ft QFE without clearance from Culdrose ATC or via relay from Perranporth Radio or Newquay ATC.

Circuits at 1000 ft QFE. All circuits to the north of the aerodrome.

Avoid flying directly over St. Agnes, Perranporth & settlements to the S of aerodrome. These areas are particularly noise sensitive. After take-off, when practicable, turn so as to track out over the sea to at least 1500 ft QNH before proceeding on course. For noise abatement, minimum power glide approaches, when practicable, would be appreciated.

When parachuting takes place, acft should hold away from aerodrome until all parachutes are on the ground.

Warning: Rwy 27 - Expect wind shear and severe turbulence in strong winds.

Fuel: 100LL.

Tel: 01872 552856 (PPR)

Website: www.perranportairfield.com

Tel: 01872 552266 - Flying Club

Website: www.perranporthflyingclub.co.uk